

Avenis 125


SUZUKI



SPORTY CITY FUN

From the sharp lines of its striking face to its upswept tail, the style of the Avenir evokes a sense of great speed and conveys the promise of an exciting experience. Sit down, pull away from the kerb and you soon discover its impressive acceleration, smooth ride, and ability to manoeuvre effortlessly through traffic. The Avenir 125 is an excellent choice for whatever you need, be it commuting, running errands, or just getting out to enjoy an exhilarating ride around town.





LED Headlight and LED Position Lights

Bright, long-lasting, low-power LEDs help you see the road ahead better at night, even when cornering. The low-mounted headlight assembly features a distinctive new stacked design that houses three LED low beam lights up top and two LED high beam lights below. Vertically-oriented LED position lights integrated into the assembly flank the headlight to add a striking accent.



Sporty meter visor

A tinted visor floats slightly above the handlebar cowling, enhancing the sharp styling of the front end and conveying the Avenis 125's eagerness to perform.



Sporty Seat

Long and well-padded, firm yet comfortable, and covered in a richly textured surface that provides a secure grip when riding, the stylish two-tone seat with attractive red stitching affords both you and your passenger a pleasant ride. In addition, its carefully crafted shape makes it easier to put both your feet on the ground when stopped, even though the Avenis 125 offers ample ground clearance for leaning into corners and ably handling bumps in the road.



Stylish grab bars and aluminium pillion rider footrests

Independent right and left aluminium grab bars, featuring a stylish, edgy design, combine with aluminum footrests to help your passenger maintain a stable posture and enjoy a more comfortable ride.



Twin LED rear combination lights

The Avenis 125's upswept tail lines culminate with a pair of independent high-mounted LED rear combination lights. Rear turn signals extending from a lower position on the tail take their cue from sportbike designs.

SUZUKI ECO PERFORMANCE

Suzuki quality and engineering excellence run far beyond the aesthetics of the Avenir. As well as delivering an exciting ride and powerful Acceleration, the Avenir 125's engine achieves optimum fuel economy and Euro 5 compliant low emissions for greater environmental responsibility. This is paired with a short wheelbase chassis that completes the package with agile handling and a smooth, comfortable ride.



Combined Brake System

Suzuki's Combined Brake System supports well-balanced braking by distributing braking force to both the front and rear wheels when the left brake lever is operated. Stable stopping power is provided by a 190mm diameter disc brake in the front and a 120 mm drum brake in the rear.

*The Combined Brake System is intended only to assist braking operation. We strongly recommend that riders normally use both brake levers to control the front and rear brakes when braking.



Sporty alloy wheels

The front and rear aluminium wheels are shod with tubeless DUNLOP D307 N tyres that deliver superior running performance and positive grip on wet surfaces. Well suited to UK road conditions, these tyres contribute to a smooth ride, even on cobblestones.



Edgy upswept muffler

Optimising performance extends to the sharply designed upswept muffler, which houses a catalytic converter that helps achieve the Euro 5 standard. Its black resin cover is light in weight and features excellent heat shielding ability.



Suzuki Eco Performance (SEP) engine

Optimisations throughout the engine come together to achieve a superior level of efficiency and riding enjoyment. As well as achieving the Euro 5 emissions standards, the engine achieves low fuel consumption of 148.67MPG (52.6km/L)* and low CO₂ emissions of 44g/km* in WMTC mode testing. It performs brilliantly, delivering powerful acceleration and instant response to a subtle twist of the throttle. Powerful torque output enables the Avenis 125 to excel in stop-and-go traffic, even when carrying a passenger. These features combine to bring you a superb balance of environmentally responsible operation and satisfying performance. In addition, the single-cylinder SEP engine for the Avenis 125 is reliable, easy to maintain, and economical to run. And, because its air-cooled design makes it compact and lightweight, this engine contributes to realising more agile handling and greater design flexibility to maximise rider comfort, utility, and eye-catching styling.

* Actual fuel consumption and CO₂ emissions may differ owing to conditions such as the weather, road, rider behavior and maintenance.

OUTSTANDING UTILITY

The Avenir 125 places great importance on providing the highest level of practical convenience. Because you want to be able to easily carry whatever gear you need, whether heading to school or the office, or picking up some groceries on the way home. You want to be able to recharge your smartphone on the go. And you want security features that give you greater peace of mind in the city.



Suzuki Easy Start System

Start the engine with one quick push of a button and off you go. A single switch that controls both the start and stop functions is conveniently located on the right handlebar for easy operation.



Attractive, functional mudguards

A hugger-type inner mudguard rides just above the rear tyre to improve splash protection and enhance the athletic appearance of the Avenir 125. The lightweight front mudguard contributes to steering ease and the sharp styling of the face.



Handy front compartments

The left-side front compartment is large enough to accommodate a large-screen smartphone. Its lid closes to offer extra protection against the elements. On the right side is a quick-access inner pocket that offers enough storage capacity to hold a 500ml beverage or some other small item you may want to keep close at hand.

USB outlet

The Avenir is equipped with a 2A USB power supply you can use to charge your smartphone on the go. Its outlet is conveniently located inside the cover of the left-side front compartment, above the tray on which you can rest your phone. An attractive blue LED remains lit as long as the ignition is turned on, making the outlet easy to locate, especially at night or in dark conditions.



- *Stowed items are shown for illustrative purposes only.
- *The weight limit for each compartment is 0.5kg.
- *Do not use the front compartments to store items that are fragile, valuable, dangerous, or susceptible to heat.
- *Do not keep electronic equipment in the front compartments while riding as the vibration may cause damage.
- *Items may be displaced depending on their shape and riding conditions.
- *Be sure to keep the front left compartment lid closed while riding.
- *Using the USB outlet while the engine is idling or stopped may drain the battery. Be aware of battery drain when using the USB outlet.
- *Failure to observe the following instructions may result in damage to the scooter or connected device.
 - Do not connect any electronic device other than a smartphone.
 - Do not use when washing the scooter or when it is raining.
- *Reattach the cap when the outlet is not in use.



Full digital instrumentation

The full digital instrument panel for the Avenir 125 features a compact LCD screen with a clean and intuitive layout that clearly displays all the information you require in real time. It is illuminated to maximise visibility both day and night. One instrument of note is the Suzuki Eco Drive Indicator, which lights up when the scooter is being ridden in a fuel-efficient manner. This instant feedback can help you learn techniques for maximising fuel economy.

- *All lights and indicators are illuminated in the photo for illustrative purposes.
- *The Eco Drive Indicator does not automatically improve fuel economy but may help riders refine their riding efficiency and improve fuel consumption.



Dual utility hooks

A pair of sturdy hooks let you hang various types of bags, including shopping bags above the floorboard. This expands your ability to carry items and provides greater convenience than accessing the underseat storage. The back hook can be locked to better secure items, and can be folded out of the way when not in use.

- *The weight limit for each hook is 1.5kg.

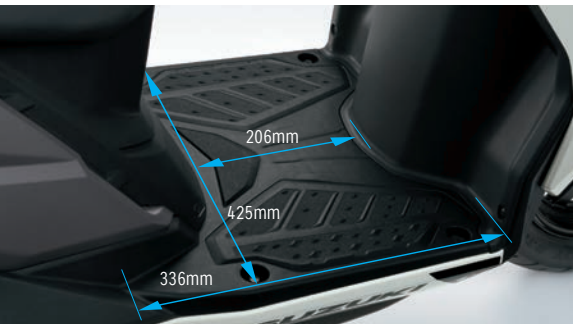


Underseat storage

With a design and capacity of 21.5L, the underseat utility compartment makes it easy to stow shopping bags, rain gear or other items where they are out of sight and protected from the elements.

*The weight limit for items in the underseat compartment is 3kg.

*Do not use the compartment to store items that are fragile, valuable, dangerous, or susceptible to heat.



Roomy floorboard with cut-away design

The generously proportioned floorboard gives you plenty of room to find the most comfortable place to rest your feet and maintain a comfortable riding position. Its convenient cut-away design makes it easier to place both your feet firmly on the ground when stopped, and the shape adds a special touch of flair to the Avenir 125's smart styling lines.



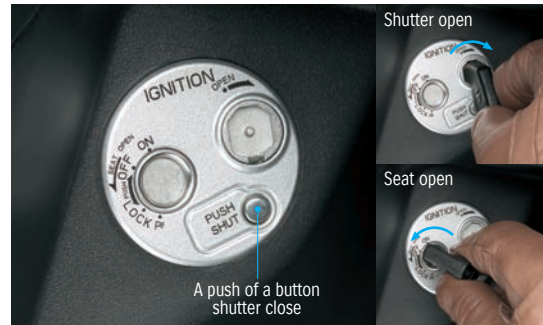
Ample ground clearance

The Address 125 is designed to offer ample ground clearance for leaning well in corners and ably handling bumps in the road. Even so, the carefully optimised seat shape makes it easier to put both your feet on the ground when stopped.



Hinged fuel cap

The hinged design of the tail-mounted cap means you can refuel without having to open the seat or hold the cap. Because the cap is at the rear, there is also no risk of soiling the floorboard or items hanging from the carrying hooks. And, since it requires a key to open, the cap helps secure the Avenir 125 against tampering.



Theft deterrent key system

You can quickly open the shutter that conceals the ignition key hole using the easy-to-operate magnetic mechanism coded to your key, even when wearing gloves. And the shutter closes again with a simple push of a button. There is also a handy function that opens the seat with the key still in the ignition, giving you quick access to the underseat utility compartment.



Rear brake lock

There's an extra switch on the left brake lever that enhances comfort and convenience by locking the rear wheel to keep the Avenir 125 in place when you stop.



Side stand interlock system

A switch attached to the side stand prevents engine ignition while the stand is down. This helps protect you against carelessly starting off with the stand extended. And the Avenir 125 is equipped with both a center stand and a side stand as standard equipment.



Pearl Mirage White / Metallic Matt Fibroin Grey (A8D)



Metallic Matt Fibroin Grey / Metallic Lush Green (CC8)

Specifications

Overall length	1,895mm (74.6in.)	
Overall width	710mm (28.0in.)	
Overall height	1,175mm (46.3in.)	
Wheelbase	1,265mm (49.8in.)	
Ground clearance	160mm (6.3in.)	
Seat height	780mm (30.7in.)	
Kerb mass	107kg (235.9lbs.)	
Engine type	4-stroke, 1-cylinder, air-cooled, SOHC	
Power	8.7PS (6.4kW) 6,750RPM	
Torque	10.0Nm 5,500RPM	
Fuel consumption (WMTC)	148.67MPG (52.6km/L)	
CO ₂	44g/km	
Bore x stroke	52.5mm x 57.4mm (2.1in x 2.3in.)	
Engine displacement	124cc (7.6cu. In.)	
Compression ratio	10.3 : 1	
Fuel system	Fuel injection	
Starter system	Electric + Kick	
Lubrication system	Wet sump	
Transmission	CVT	
Suspension	Front	Telescopic, coil spring, oil damped
	Rear	Swingarm type, coil spring, oil damped
Rake / trail	26° 30' / 89mm (3.5in)	
Brakes	Front	Disc
	Rear	Drum
Tyres	Front	90/90-12, tubeless
	Rear	90/100-10, tubeless
Ignition system	Electronic ignition (transistorised)	
Fuel tank capacity	5.2L (1.1 / Imp gal)	
Oil capacity (overhaul)	0.8L (0.2 / Imp qt)	

Specifications, appearance, colours, (including body colour), equipment, materials and other aspects

of the "SUZUKI" products shown in the brochure are subject to change by Suzuki at any time without notice, and they may vary depending on local conditions or requirements. Some models are not available in some territories. Each model may be discontinued without notice. Please enquire at your local dealer for details of any such changes. All images of professional riders in controlled conditions.

- Always wear a helmet, eye protection and protective clothing.
- Enjoy riding safety.
- Read your Owner's Manual carefully.
- Never ride under the influence of alcohol or other drugs.

To find your nearest
Dealer visit